

Reconvened Annual Meeting

The Bowling Brook Farms Association, Inc., 2013 Annual Meeting, originally called for January 16, 2013, will be reconvened on Wednesday, February 20, 2013 at 7:00 PM at Savage United Methodist Church, Faith & Ministry Bldg, 9050 Baltimore Street, Savage, MD. At this February 20, 2013 meeting, the members present in person or by proxy will constitute a quorum. If you cannot attend, please mail in your proxy and ballot to the CVI office. Your Vote Counts!

At the reconvened annual meeting, two persons will be elected to the Board. (The Board consists of five total members.) You, the homeowner, elect these representatives to sit on the Board and make decisions on behalf of all homeowners. That is why the election and annual meeting require your participation.

Your elected Board handles some very important matters for the association. The Board's duties and responsibilities are outlined in the Bylaws of the association. Here are some of the "powers and duties":

- * adopt and publish rules and regulations
- * exercise for the Association all powers, duties and authority vested in or delegated to the Association
- * keep a complete record of all acts and corporate affairs
- * supervise all officers, agents and employees of the Association
- * fix the amount of the annual assessment
- * cause the common area to be maintained
- * cause the exterior of the dwellings to be maintained

These are hefty responsibilities for your elected women and men of the Board. This is not a paid job, but a volunteer position. These homeowners devote their time and energy to help improve and become involved in the Bowling Brook community. Each has their own job outside of their life as a Board member – so they can be quite busy. This is a responsibility that each Board member takes very seriously. As homeowners in the community themselves, they value what happens with their home and community; so they volunteer their time and knowledge to get involved. We would love to see more homeowners and residents participate in the Board meetings and provide input so the Board can make the best decisions affecting all homeowners in the community.

Useful websites

Real estate values: <http://www.zillow.com/>

Home maintenance: <https://brightnest.com/>

Home maintenance tips: <http://www.houselogic.com/>

Registered sex offender database: <http://www.dpscs.state.md.us/sorSearch/>

Howard county public school system: <http://www.hcpss.org/>

Howard county snow plow tracker: <http://howardcountymdpublic.eroadtrack.com/>

Contractor license search: <http://www.dllr.state.md.us/pq/>

Contractor search: <http://www.1800contractor.com/>

Contractor search: <http://www.servicemagic.com/>

Howard County Trash Services in Bowling Brook Farms

REGULAR HOUSEHOLD TRASH is picked up on Tuesdays (except for Birkenhead Court, which is picked up on Wednesdays). Please review AND remember the following guidelines regarding regular household trash disposal:

- Each household is limited to four (4) items not exceeding forty (40) pounds. The four items can include cans, bags or bundles (bundles must be less than four feet (4') in length and 1" in diameter).

- PROHIBITED ITEMS ARE:

Liquids such as wet paint and motor oil

Hazardous, toxic or flammable materials

Bulk items (appliances, carpets, mattresses, or large equipment or furniture)

Car parts – tires, wheels or batteries



It is also important to note that during the period April 1 – December 31 when yard trimming recycling is available (see below), grass, leaves and light brush WILL NOT be accepted for pickup on regular trash day.

- Trash or recycling containers should **BE PLACED OUT AFTER 7:00 P.M. THE DAY BEFORE COLLECTION AND BE REMOVED AND STORED IN THE REAR YARD AFTER PICK-UP, OUT OF PUBLIC VIEW THE DAY OF COLLECTION.**
- Trash should be placed in “group” trash areas at curb islands for pickup.
- Trash can be put out for pickup in reusable metal or tough plastic containers with handles and watertight fitting lids or in HEAVY GAUGE plastic bags that are securely tied. NOTE: Cleanup of the common collection areas should be shared by all.

The trash that is spilled and/or spread by animals or wind is the responsibility of each resident that uses the “group” trash areas.

BULK TRASH – Household bulk items such as appliances, carpets, mattresses, large equipment, furniture, etc., are the responsibility of each homeowner to dispose. Homeowners can call for curbside pick-up at 410-313-6444 or these items can be dropped off at the Alpha Ridge Landfill Residents’ Convenience Center. Monday-Saturday 8:00 a.m.- 4:00 p.m. Items should not be placed out for pick-up until the evening before your scheduled pick-up date.

HOUSEHOLD HAZARDOUS WASTE – Household hazardous waste consists of wet paint, motor oil, household chemicals or cleaners, toxic or flammable materials, car parts (i.e., tires, wheels or batteries), medical waste, coals, ashes, soil, rocks, ammunition, explosives or firearms. These items can also be dropped off at the Alpha Ridge Landfill Residents’ Convenience Center on Saturdays from 8:00 a.m. – 4:00 p.m.

For details on recycling or more information regarding the above information, visit the Howard County Website at www.co.ho.md.us or call 410-313-SORT.

MOST IMPORTANTLY – IF THE COUNTY DOES NOT PICK UP YOUR GARBAGE OR RECYCLING, IT IS YOUR RESPONSIBILITY TO FIND AN ALTERNATE METHOD OF DISPOSAL. PLEASE DO NOT LEAVE IT OUT FOR THE NEXT PICKUP. The County will not remove your items if it is not being properly disposed.

ALSO NOTE: The large dumpsters located at the apartments are NOT for Bowling Brook Farms’ use. These are the property of the apartment complex. The apartments may hire patrols for their property and will follow through with any violations of illegal dumping or trespassing.



NEWS RELEASE

HOWARD COUNTY DEPARTMENT OF POLICE OFFICE OF PUBLIC AFFAIRS

For Release: November 19, 2012

Contact: Sherry Llewellyn, (410) 313-2236
sllewellyn@howardcountymd.gov

Police announce new smartphone app, iWatchHowardCounty

Howard County police are announcing the launch of a new smartphone app that will allow users to anonymously send crime tips by text, email, photo or video. iWatchHowardCounty will give citizens the power to provide information to police easily and quickly.

Howard County is the first jurisdiction in Maryland to use iWatch technology.

"We think this tool will be invaluable," said Police Chief William McMahon. "While it is certainly not intended to replace 911 in an emergency, it will be used like a tip line for citizens to provide crime information to police. Once users download the app, they can be the eyes and ears of their communities, with a direct and immediate link to law enforcement."

For crimes in progress or emergency situations, residents should continue to call 911. But users who download iWatchHowardCounty can provide tips and general information about suspicious behavior, criminal activities or crimes police are already investigating.

County Executive Ken Ulman praised this innovative use of mobile technology. "The potential for this app to be used in crime prevention and crime reporting is endless. Once again, Howard County is on the cutting edge of technology. This makes it easier for our residents to connect with, and aid, our police officers. It will help us prevent crime and it will help us gather the information we need to solve crimes."

Tips sent through the iWatch app are anonymous. The data is encrypted so users cannot be identified, unless they choose to provide that information to police. Information received will be forwarded to investigators.

The app is free and can be downloaded to an iPhone, Android or Blackberry by searching "iWatchHowardCounty" in the app store. For those without smartphones, it can be downloaded directly to a PC or laptop at www.iWatchHowardCounty.com. For citizens who prefer to call by phone, the current tip line number, 410-313-STOP, remains operational.

iWatch will also enable users to receive Howard County Police Department news and information in real time as it is posted on social media sites. Citizens also will be able to take a survey about the police department to provide input or opinions about the agency.

"The launch of this technology is part of our ongoing effort to maintain strong partnerships with our communities," said Chief McMahon. "Howard County is a great place to live and work, but only if people can continue to feel safe. This is one more tool for police and the public to communicate and work together to make that happen."

If It's Your Pet, It's Your Responsibility...

- to ensure that it has proper licenses and vaccines,
- to ensure that it is on a leash and under the control of a responsible person capable
- of immediate and effective restraint,
- to ensure the proper disposal of excrement on public and private property.

The association has specific rules pertaining to dog ownership as does Howard County. Contact Howard County Animal Control for a complete list of Laws at 410-313-2780. In addition, your community has spent a considerable amount of money to make dog walk stations with disposal bags and cans available for homeowners to pick-up after their pets. Be a responsible pet owner!



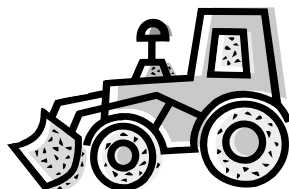
Snow Services Fact Sheet for Bowling Brook Farms

The winter months are here and with that in mind, we would like to remind owners of the association's snow plan.


Homeowners are responsible for shoveling the leadwalks and the common area sidewalks in front of their homes.

The association is responsible for clearing sidewalks that parallel the main roads of Knights Bridge, Horsham Drive, Gorman Road, Stephens Road and the asphalt path between Fens Hollow and Horsham Drive. In addition, the association will clear sidewalks on each court from the main road up to the first home in each court. Snow clearing will start within 12 hours of the end of the snowfall only when snow reaches 4" or more.

Howard County plows all of the streets (main roads first, neighborhood roads to follow; one truck route may take 12-18 hours). You may contact Howard County at 410-313-7450 regarding snow removal or visit their website to follow their 'snow plow tracker' – www.co.ho.md.us. Parking spaces will only be plowed by the association when the snow depth is 12" or more.

An advertisement for the iWatch Howard County app. It features a smiling police officer in uniform holding a smartphone. The text includes the app name, a quote from Chief William McMahon, and information about downloading the app.

iWATCH
HOWARD COUNTY



**"iWATCH
HOWARD COUNTY.
DO YOU?"**

-Chief William McMahon

iWatchHowardCounty app
Send crime tips - it's anonymous and free!
Download for your iPhone, Android or Blackberry
at your app store or online at:
www.iWatchHowardCounty.com.

Winter Storms

To prepare for a winter storm you should add the following supplies to your emergency kit:

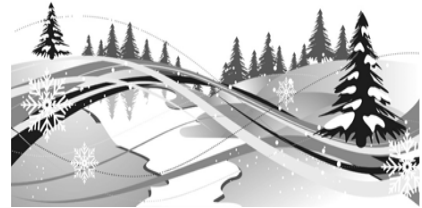
- Rock salt or more environmentally safe products to melt ice on walkways
- Sand to improve traction.
- Snow shovels and other snow removal equipment.
- Sufficient heating fuel. You may become isolated in your home and regular fuel sources may be cut off.
- Store a good supply of dry, seasoned wood for your fireplace or wood-burning stove.
- Adequate clothing and blankets to keep you warm.

Make a Family Communications Plan. Your family may not be together when disaster strikes, so it is important to know how you will contact one another, how you will get back together and what you will do in case of an emergency.

Listen to a NOAA Weather Radio or other local news channels for critical information from the National Weather Service (NWS). Be alert to changing weather conditions.

Minimize travel. If travel is necessary, keep a disaster supplies kit in your vehicle.

Bring pets/companion animals inside for winter weather before it strikes.
Courtesy of FEMA



Community Advertisers



RE/MAX
Advantage Realty
Paula & Leon Hasnain, CRS, GRI
Certified Residential Specialist
Graduate REALTOR® Institute
REALTORS®

Office: (888) 295-6005
Cell: (301) 466-1002
Fax: (240) 295-4220
E-mail: Leonh@mris.com
www.LeonHasnain.com

Each Office Independently Owned and Operated



Steven Huffman
REALTOR®

FREE 1 YEAR HOME WARRANTY
For Bowling Brook Residents Who Use
Steven To Sell And / Or Buy

C: 2403937448
O: 4103813331
shuffman@weichert.com

Weichert Realtors
New Colony



Quality Service • Reasonable Prices
Pressure Cleaning (Decks & Siding)

PAINTING
by George

GEORGE SUPSIC
(301) 490-4847

References
Licensed/Insured
MHIC 66985

Disclaimer: "Neither the association nor CVI endorse these contractors or guarantee their workmanship. These contractors are provided only for your convenience. Any bill incurred by the homeowner will be the responsibility of the homeowner. All arrangements are strictly between the homeowner and the contractor."

A Note from TFCU

JOIN TOWER FEDERAL CREDIT UNION

Reward yourself with savings, value and superior service

As a Bowling Brook Homeowners Association member, you are eligible to become a member of Tower Federal Credit Union. By joining Tower, you'll have the advantages of lower loan rates and no or low-fee services. You'll also save money with free checking, a no-fee debit card and thousands of surcharge-free ATMs.

Pay Less Interest on Credit Card Balances—Special Offer from Tower

As a member of Tower, you save more with a Tower MasterCard®. Receive a special balance transfer interest rate of 4.99% APR. Just transfer your high-rate credit card balances to a Tower MasterCard between December 1, 2012 and April 30, 2013. Your rate for the total amount you transfer will be only 4.99% APR for 12 months from the date of your transfer. After that, the rate becomes Tower's everyday, low 10.9% APR. At Tower, you pay no balance transfer fee and keep more money in your wallet. Take advantage of Tower's special credit card balance transfer rate, available for a limited time.

Visit towerfcu.org to apply for Tower membership and then apply for a Tower MasterCard safely and securely online. Or stop by Tower's nearby Laurel branch at 7901 Sandy Spring Road.

Membership questions? Call the Member Service Center at **301-497-7000** or **800-787-8328**. Visit towerfcu.org for other Tower branch and surcharge-free ATM locations where you live or work.

Bowling Brook Farms
c/o CVI
6300 Woodside Court, Suite 10
Columbia MD 21046-3212